



# NAN

## PCR (Property Condition Report)

## Alternative Valuation

www.nan-amc.com  
888.760.8899

### WHAT IS PCR?



Property Condition Report is obtained by a local, trained, data collector. This report includes the data collection by a third-party data collector which obtains the material characteristics regarding the entirety of a subject property. These reports include photos of interior and exterior along with the possibility to include sketch/floorplans.

### BENEFITS



**Faster Turn Time**



**Interior/Exterior Data Collection with Photos to Obtain Accurate Descriptions of the Subject and Neighborhood**



**Lower Price Point**



**Provides the Ability to Upgrade to a Bifurcated Appraisal when Applicable**



**Ability to Assess Property Condition Without a Full Valuation**

### USE CASES



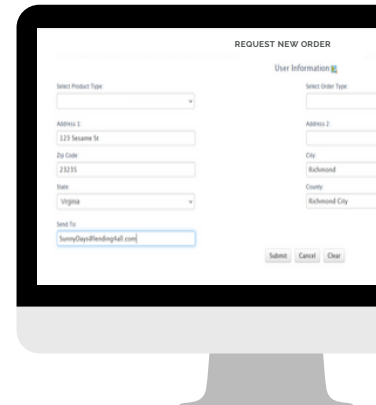
- Private Lending
- Bridge Loans
- Renovation Loans
- Investor Collateral Risk
- Portfolio Loans

### GET STARTED

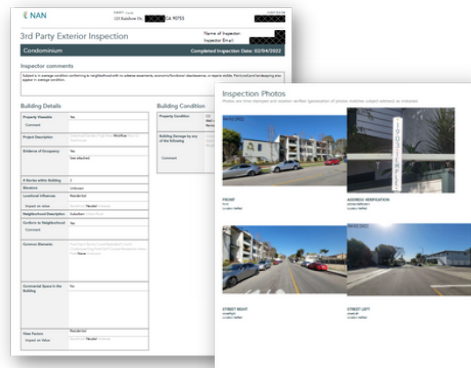


#### Quick & Easy Steps to Placing a PCR Order

1. To create an account with NAN click [HERE](#) or login to your existing NAN [account](#).
2. Once logged in, hover over the green plus sign (+) at the top right corner showing "NEW ORDER" and select "Appraisal" from dropdown.
3. Select Appraisal Form Type: "PCR"
4. Click the "Submit" button.
5. If you have questions regarding placing an order, please contact [client@nan-amc.com](mailto:client@nan-amc.com).



### SAMPLE REPORT



[View Sample Report](#)

[Place an Order](#)

Fee table available upon request



Questions?

FOR MORE INFORMATION CONTACT  
YOUR REGIONAL SALES TEAM

[NAN Key Contacts](#)



[sales@nan-amc.com](mailto:sales@nan-amc.com)



888.760.8899



[www.nan-amc.com](http://www.nan-amc.com)